

This is a "PROVISIONAL BUILDING PLAN" approved only for the purpose of inviting objections from the general public.

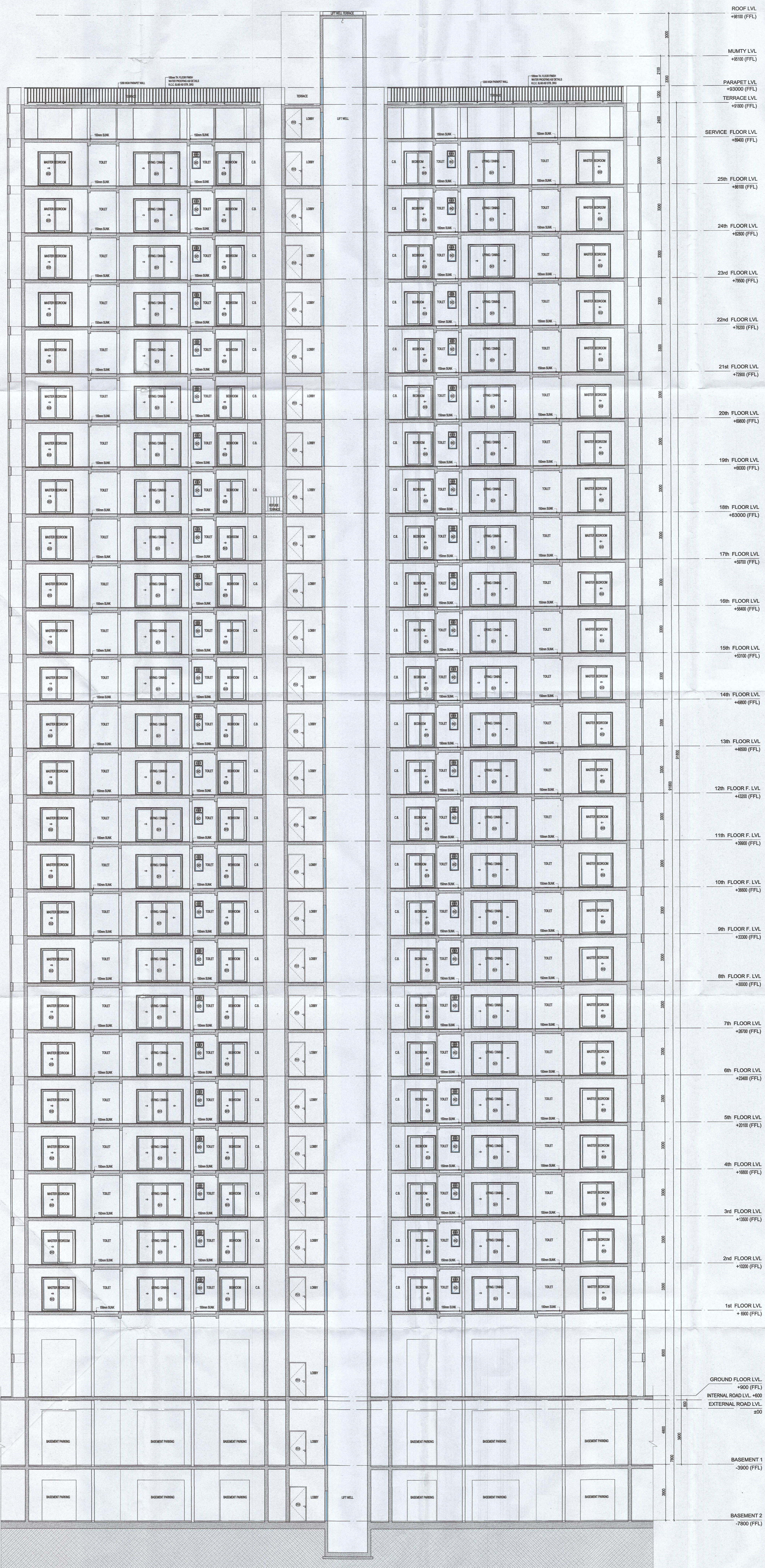
[Signatures]
 S.P. Singh
 Member Secretary
 S.P. Singh
 Member Secretary
 S.P. Singh
 Member Secretary

[Signatures]
 S.P. Singh
 P.A.
 A.T.P.

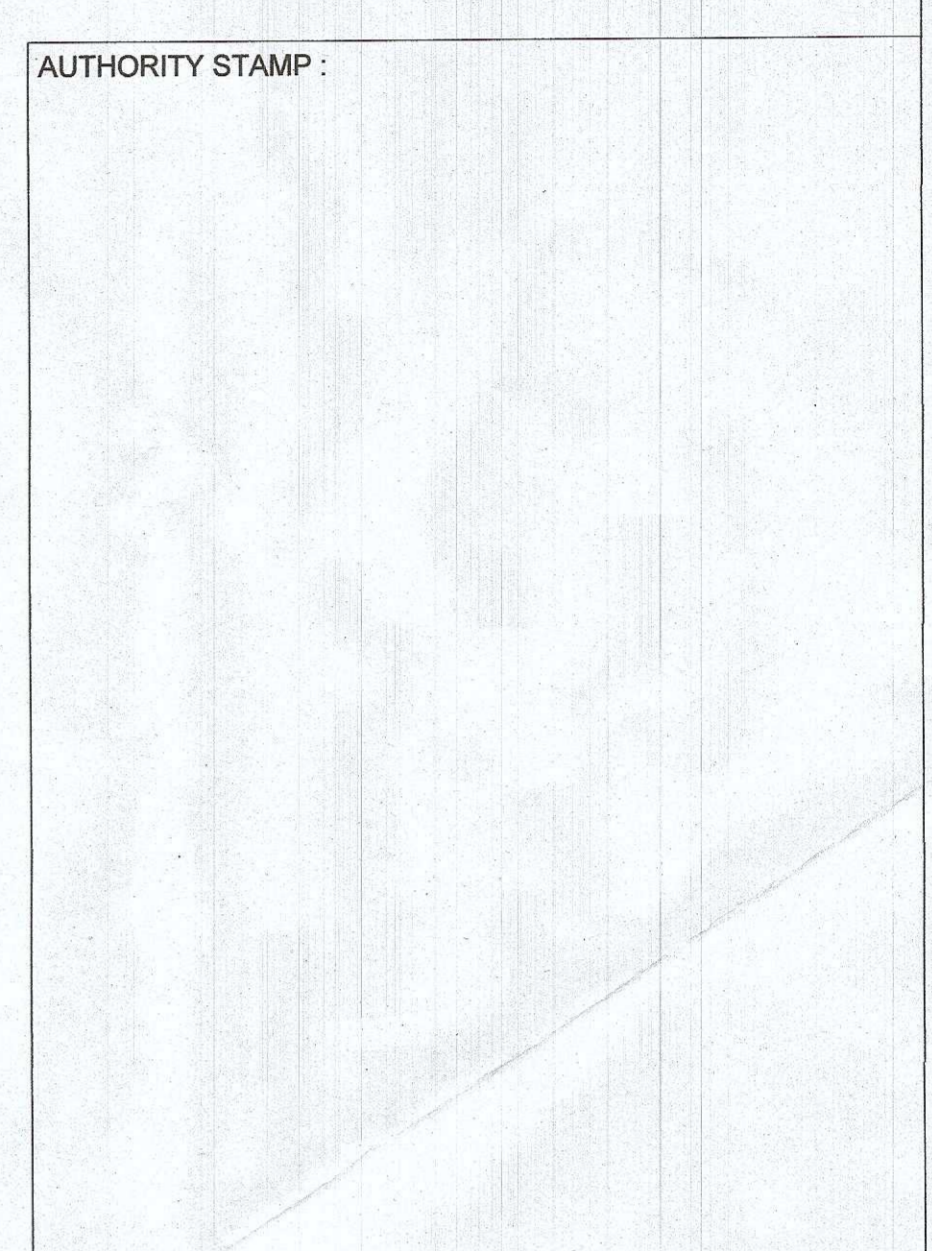
TO BE READ WITH THIS OFFICE MEMO NO. DATED:

Ram Avtar Basi
 JDMCO

[Signatures]
 S.P. Singh
 Member Secretary



ROOF LVL +9100 (FFL)
 MUMTY LVL +9100 (FFL)
 PARAPET LVL +9300 (FFL)
 TERRACE LVL +9100 (FFL)
 SERVICE FLOOR LVL +9400 (FFL)
 25th FLOOR LVL +8100 (FFL)
 24th FLOOR LVL +8200 (FFL)
 23rd FLOOR LVL +7900 (FFL)
 22nd FLOOR LVL +7800 (FFL)
 21st FLOOR LVL +7900 (FFL)
 20th FLOOR LVL +8000 (FFL)
 19th FLOOR LVL +8100 (FFL)
 18th FLOOR LVL +8200 (FFL)
 17th FLOOR LVL +8300 (FFL)
 16th FLOOR LVL +8400 (FFL)
 15th FLOOR LVL +8500 (FFL)
 14th FLOOR LVL +8600 (FFL)
 13th FLOOR LVL +8700 (FFL)
 12th FLOOR F. LVL +8800 (FFL)
 11th FLOOR F. LVL +8900 (FFL)
 10th FLOOR F. LVL +9000 (FFL)
 9th FLOOR F. LVL +9100 (FFL)
 8th FLOOR F. LVL +9200 (FFL)
 7th FLOOR LVL +9300 (FFL)
 6th FLOOR LVL +9400 (FFL)
 5th FLOOR LVL +9500 (FFL)
 4th FLOOR LVL +9600 (FFL)
 3rd FLOOR LVL +9700 (FFL)
 2nd FLOOR LVL +9800 (FFL)
 1st FLOOR LVL +9900 (FFL)
 GROUND FLOOR LVL +000 (FFL)
 INTERNAL ROAD LVL +000
 EXTERNAL ROAD LVL +000
 BASEMENT 1 -3000 (FFL)
 BASEMENT 2 -7800 (FFL)



ARCHITECT:-
rajeev agarwal architects
 j-1963, chitranganj park
 new delhi - 110015
 tel: 011-46529548
 website: www.rajeevagarwal.com

STRUCTURE
NNC DESIGN INTERNATIONAL
 CONSULTING STRUCTURAL ENGINEERS
 G-70, 2nd FLOOR, F.I.E. PIGANJAL
 INDUSTRIAL AREA, DELHI-110022
 PHONE NO.: +91-11-26467974/77 FAX: 26467978
 E-Mail: nnc_consultants@hotmail.com
 Web: www.nncdesigninternational.com

MEP Consultants
PDA
 180, 2nd Floor, F.I.E. PIGANJAL
 INDUSTRIAL AREA, DELHI-110022
 M: 9717071532; Tel/Fax:
 +91-11-4248301-2

PROJECT LANDSCAPE CONSULTANTS
Oracles | Plural Design Consultants
 G 98 Kalkaji New Delhi 110 019 |
 India | +91 11 2648 1830 | +91
 98110 2950

PROJECT TITLE
 Approval of revised building plans of
 Group Housing Colony area measuring
 16.54 acres (license no. 67 of 2011
 dated 16.07.2011), sector-77
 Gurugram being developed by Janpriya
 Build Estate Pvt.Ltd. & Others C/o
 Umang Realtech Pvt.Ltd.

ARCHITECT'S SIGNATURE / STAMP:

RAJEEV KUMAR AGARWAL
 ARCHITECT CA/68/11915

OWNER SIGNATURE / STAMP:

 FOR JANPRIYA BUILDESTATE PVT. LTD.
 Authorised Signatory

DRAWING TITLE :
4B BLOCK SECTION - CC'

SCALE
 1:100

DATE
 05 - JAN - 2022

DRAWING NO.
 15/31

RELEASED FOR -
 INFORMATION
 EIA
 TENDER
 ADVANCE COPY
 SUBMISSION DRG.
 GFC

SECTION - CC'

MAQSUDE AZAR
 M.Tech (Structures), Ph.D. (Structures)
 Member Institute of Engineers (India)
 AM6867100